



CHRISTOPHER MILLS CONSERVATION SERVICES, LLC

Straford Hall Plantation House c.1738

Dining Room, Cherry Tree Room, Bed Chamber, Nursery, Passages

Recreation of Historic Finishes using Traditional Tools and Materials

Contact: Phil Mark, Historic Preservation Director

Stratford Hall was built in 1738 and was the plantation house of four generations of the Lee family of Virginia. Over the past decade the staff at the museum has been committed to accurate and sensitive restorations of their period rooms. Based on extensive research and scientific analysis, finishes were recreated using period appropriate tools, methods and materials for the Dining Room, Cherry Tree Room, NW Bed Chamber, Nursery and Passages. Linseed oil paint, Distemper (hide glue binder), woodgraining glazes and limewashes were hand-made using a muller and slab with the specific pigments, medium and varnishes identified through analysis. Existing finishes were first cleaned, stabilized and protected with a reversible barrier. After testing the traditional materials for compatibility with existing finishes, the hand-made paints were applied using large, natural hair round brushes for linseed oil and large, block brushed for Distemper.



Dining Room /Cherry Tree Room



Paint making materials



Grinding pigment



During installation of Verdigris paint on wooden elements and dark grey Distemper walls



Dining Room/Cherry Tree Room after installation. Dark grey Distemper walls, Verdigris wooden elements

Northwest Bed Chamber



Testing surfaces for compatibility



Woodgrained door conservation



Distemper paint



During installation of Distemper paint

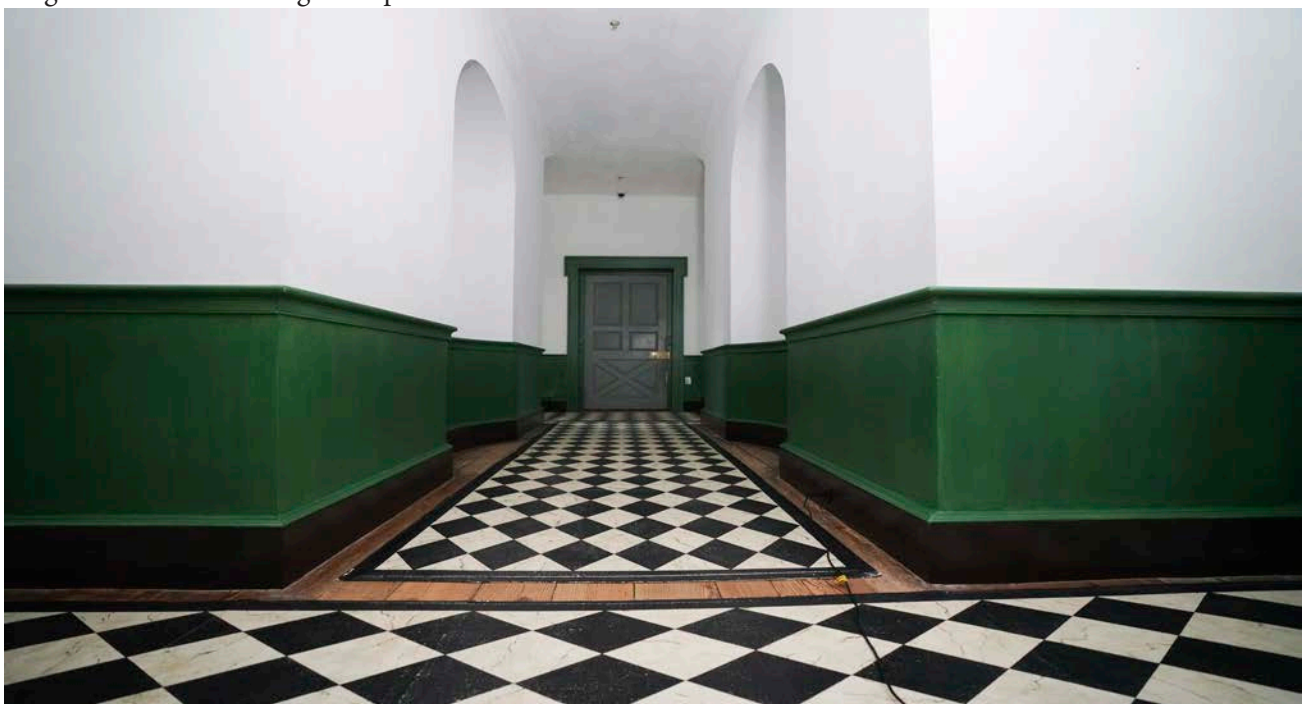


NW Bed Chamber after installation. Distemper walls, Linseed oil paint wooden elements, Limewash ceiling

Passages



During installation of Verdigris oil paint



South Passage after installation of Verdigris oil paint, chocolate brown baseboard and limewash walls