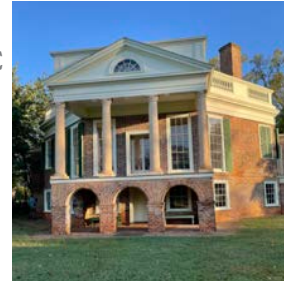




CHRISTOPHER MILLS CONSERVATION SERVICES, LLC



Thomas Jefferson's Poplar Forest

Application of Hand-Made Distemper, Oil, and Limewashes

Contact: Travis McDonald, Director of Architectural Restoration

Poplar Forest was designed and constructed under the supervision of Thomas Jefferson starting in 1806. After a catastrophic fire in 1845, the remaining brick structure was modified many times by various owners. Over the past three decades, the site has undergone an intensive architectural restoration, reconstructing Jefferson's designs using period-appropriate methods and materials.

Between September 12 and October 11, 2022, Chris Mills and team were on-site at Thomas Jefferson's Poplar Forest to manufacture and install hand-made finishes in seven different rooms. Completing one of the largest restorations using only traditional methods and tools in America.



Dining Room before distemper installation



Grinding pigments for distemper



Distemper drying

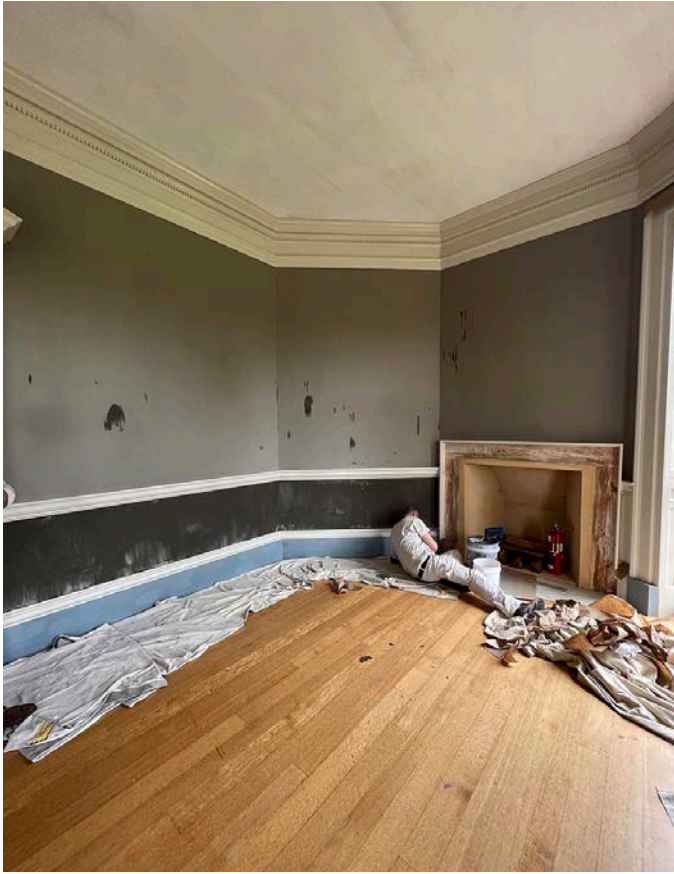


Dining Room distemper application

135 high street
becket ma 01223

646-270-0999
www.chrismillsconservation.com

167 congress street 3r
brooklyn ny 11201



Parlor during distemper application



Bedchamber linseed oil detail



Bedchamber -Linseed oil satin walls and gloss oil woodwork, limewash ceiling

135 high street
becket ma 01223

646-270-0999
www.chrismillsconservation.com

167 congress street 3r
brooklyn ny 11201



Dining Room -Distemper walls, gloss woodwork, limewash ceiling



Dining Room finished

135 high street
becket ma 01223

646-270-0999
www.chrismillsconservation.com

167 congress street 3r
brooklyn ny 11201



Bedchamber finished



Parlor- Distemper walls and gloss woodwork, limewash ceiling

135 high street
becket ma 01223

646-270-0999
www.chrismillsconservation.com

167 congress street 3r
brooklyn ny 11201



135 high street
becket ma 01223

646-270-0999
www.chrismillsconservation.com

167 congress street 3r
brooklyn ny 11201